



CorEnzo
EcoService

MOBILE HARDSTONE CRUSHING AND SCREENING





MCK-90 MOBILE HARDSTONE CRUSHING & SCREENING PLANT

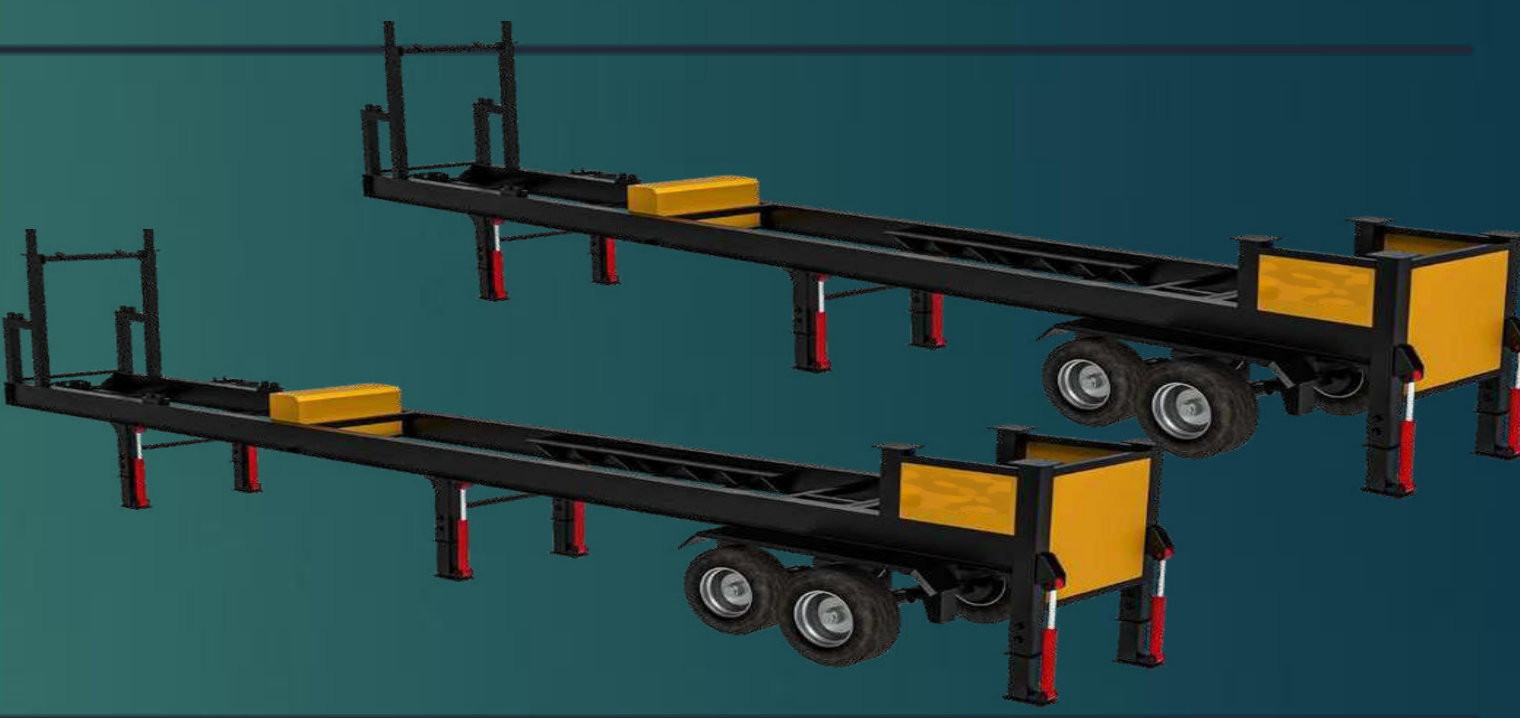
PRODUCTION CAPACITY : 120-180 T/H
NOTE: THE VALUES GIVEN ARE AVERAGE VALUES, THEY MAY VARY BY +/-10% ACCORDING TO THE INCOMING STONE SIZES.

MAXIMUM FEEDING: 0-600 MM
NOTE: THE MORE FREQUENTLY THE BLASTING IS DONE AND THE SMALLER IT IS, THE HIGHER THE MACHINE CAPACITY

CorEnzo IMPLEMENTED THE MCK-90 MOBILE HARDSTONE CRUSHING & SCREENING PLANT AS A DOUBLE CHASSIS.

WHY DOUBLE CHASSIS PRODUCTION?
 THE SIZE AND WEIGHT OF THE CRUSHERS, WHICH INCREASES AT THE SAME RATE AS THE CRUSHING CAPACITY ARE DIVIDED INTO DOUBLE CHASSIS. IN THIS WAY, THE SIZE OF THE CRUSHER GETS MINIMIZED AND IT IS FACILITATED DURING THE TRANSPORTATION OF THE PLANT.
GENERAL FEATURES AND ADVANTAGES
 THE DOUBLE CHASSIS PROVIDES EASE OF TRANSPORTATION
 TWO CHASSIS CAN BE OPERATED SEPARATELY IF NECESSARY

STRONG DOUBLE CHASSIS



BRAKE AXLE SYSTEM



HYDRAULIC FIXING LEGS



1. MOBILE CHASSIS

. IN THE FIRST CHASSIS, THERE IS A BUNKER, JAW CRUSHER, CONVEYOR BELT AND HYDRAULIC SYSTEM

-CHASSIS BODY IS PRODUCED FROM 400 IPE S275JR.

-CHASSIS AND BUNKER FEET ARE PRODUCED FROM 200x200x10mm SPECIAL PROFILE.

-TELESCOPIC LEGS 180x180x8mm MANUFACTURED FROM PROFILE.

-CHASSIS LEGS ARE TELESCOPIC.

-IT HAS 2 AXLES AND WALKS WITH AIR BRAKES.

-THERE ARE PARTS AND SIGNALING EQUIPMENT.

-IT HAS A SPECIAL HEAVY-DUTY CONSTRUCTION CHASSIS.

-HYDRAULIC FEET MECHANISM (6 PCS)

-2 INCH KING PIN WITH SPECIAL HEAT TREATMENT.

-ALL ELECTRICAL COMPONENTS WILL BE USED AS SIEMENS OR SCHNEIDER BRANDS AND WILL BE USED BY SELECTING AN UPPER POWER VALUE ACCORDING TO THE LIMIT LEVEL.

-THERE ARE TWO EMERGENCY STOP BUTTONS AT THE FRONT AND BACK OF THE PLANT.

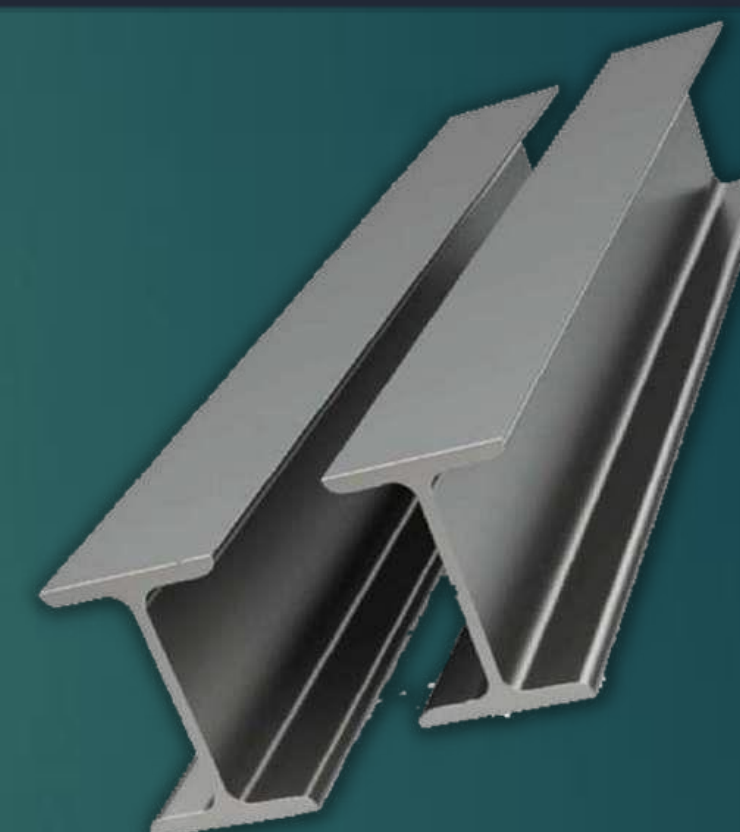
HYDRAULIC
FIXING
LEGS

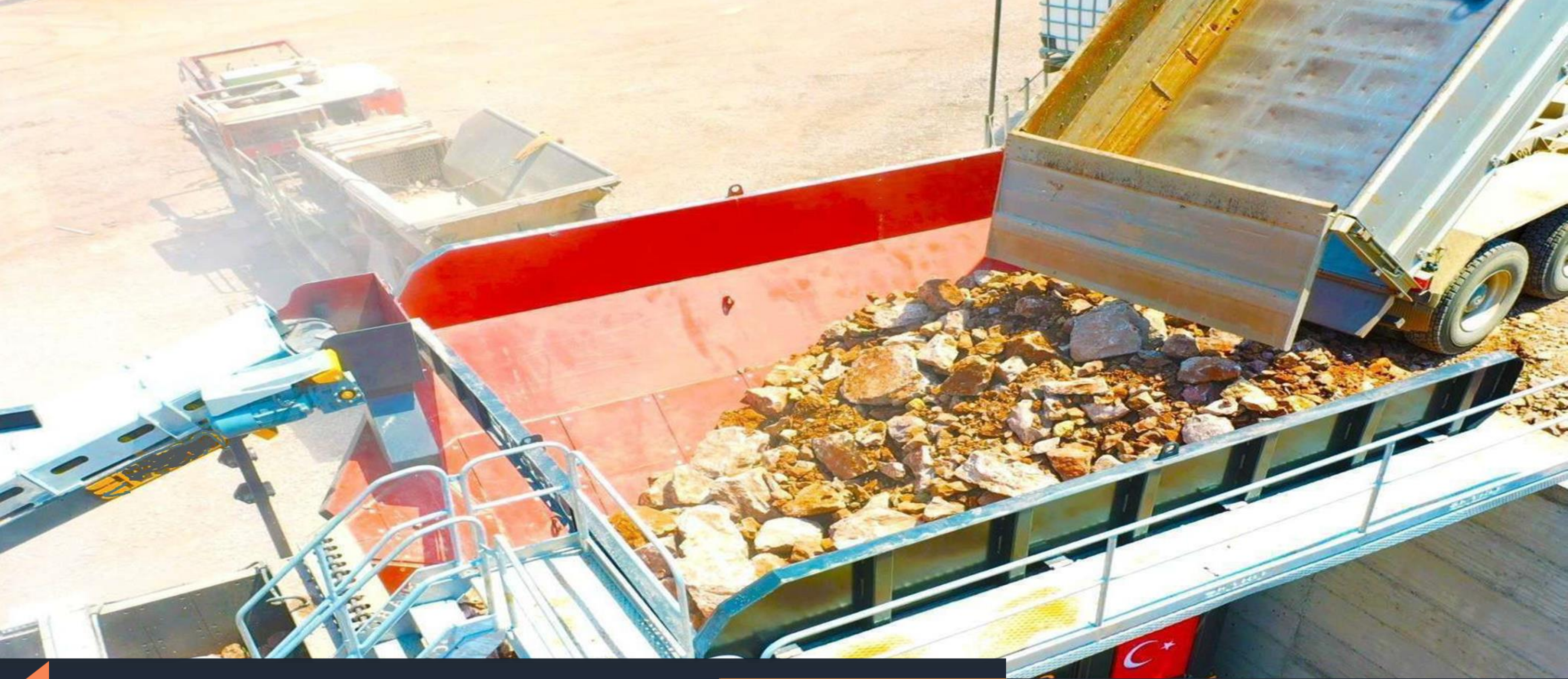


BRAKE
AXLE
SYSTEM



ROBUST
CHASSIS
BODY





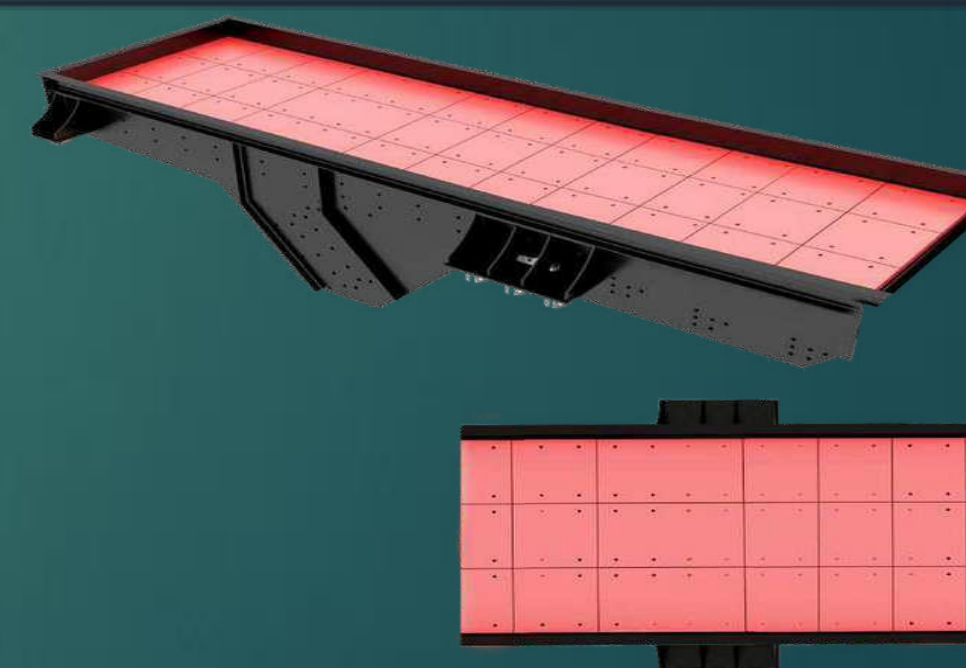
VIBRATING FEEDING HOOPER

VIBRO MOTOR



CE

DOUBLE STAGED FEEDER



CE

DURABLE STRONG SPRINGS




CorEnzo
EcoService

- MODEL : TBX-22.5
- BUNKER CAPACITY : 22.5 M3
- SIDE BODY SUPPLEMENTS : 10mm ST- 37
- BODY SHEET: 15 MM ST-37
- BUNKER; CAN BE FEED BY EXCAVATOR, LOADER AND TRUCK.
- BUNKER HAS WALKING, CONTROL, MAINTENANCE PLATFORM.
- THERE ARE PROTECTION ENCLOSURES SUITABLE FOR OCCUPATIONAL SAFETY.
- VERY USEFUL FEEDING STRUCTURE
- THE FEEDER IS BY-PASS WITH 2 STAGES AND IS A NEW GENERATION ADJUSTABLE TYPE MODEL.



BY PASS CONVEYOR

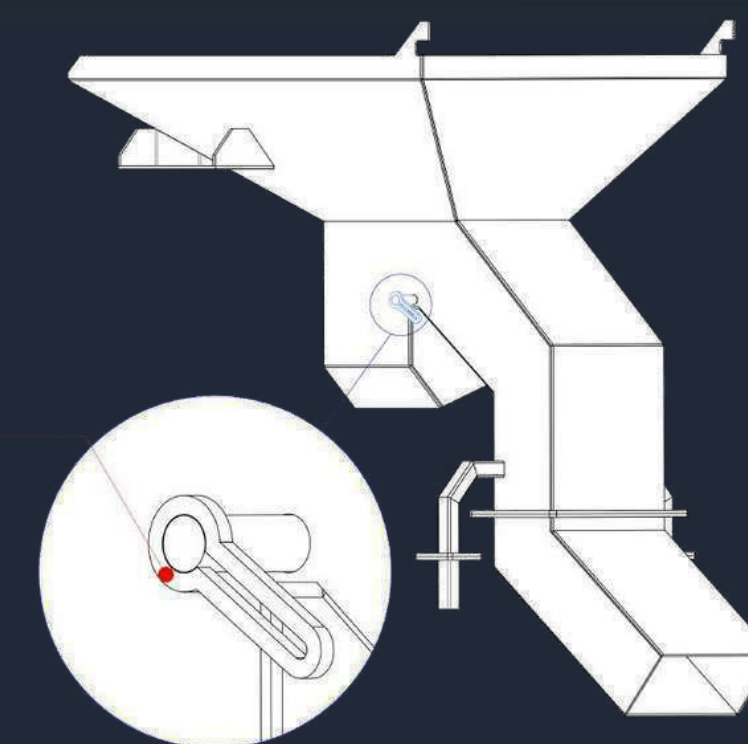
- LENGTH: 4700 MM
- WIDTH: 500 MM
- MOTOR POWER: 4 kW
- BELT BEARING CASE: UCP 211 VE UCT 211
- BELT CHASSIS: 4 MM ST 37 TWISTED SHEET
- DRIVE DRUMS: Ø 220 MM 10 MM RUBBER COATED
- TENSIONER DRUM: Ø 220 MM
- ROLLER STATIONS: 750MM INTERSPACE
- RETURN ROLLER STATION: 2250MM INTERSPACE
- SIDE SCRAPER: INCLUDED
- THE ABILITY TO SEND PRODUCTS DIRECTLY TO THE SCREEN OR BYPASS CONVEYOR BELT, THANKS TO THE CUSTOM-MADE BIDIRECTIONAL CONVEYOR BELT.

COUPLED MOTORS

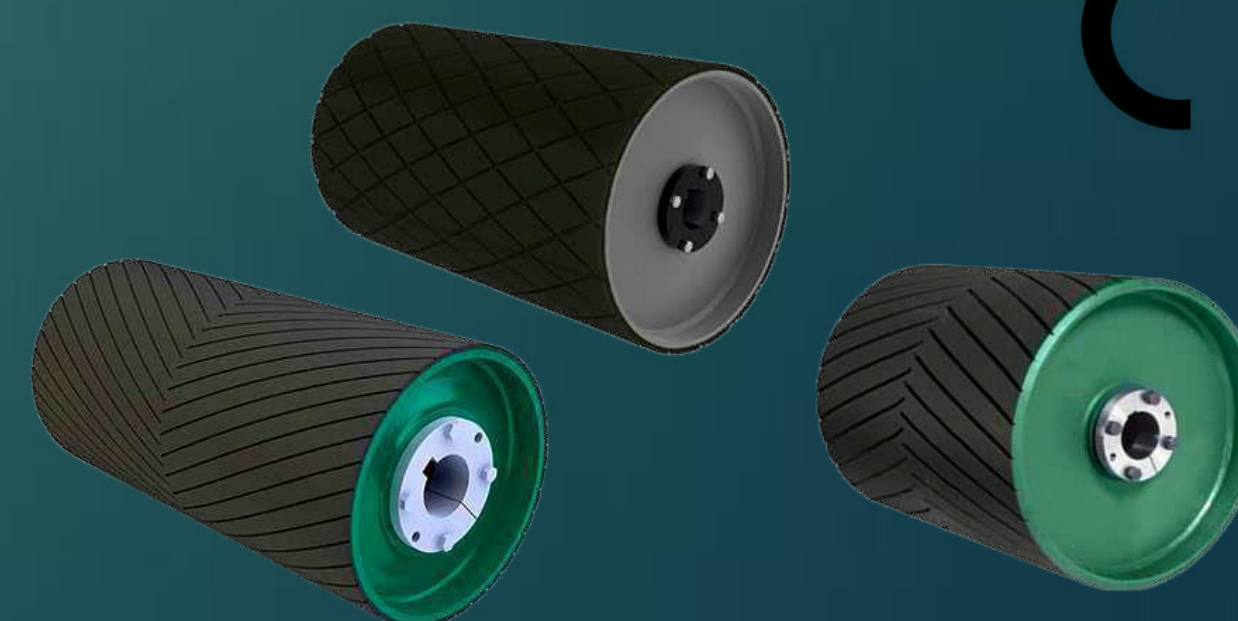


CE

CUSTOM MADE FLAP SYSTEM



RUBBER COATED DRIVE DRUM



CE



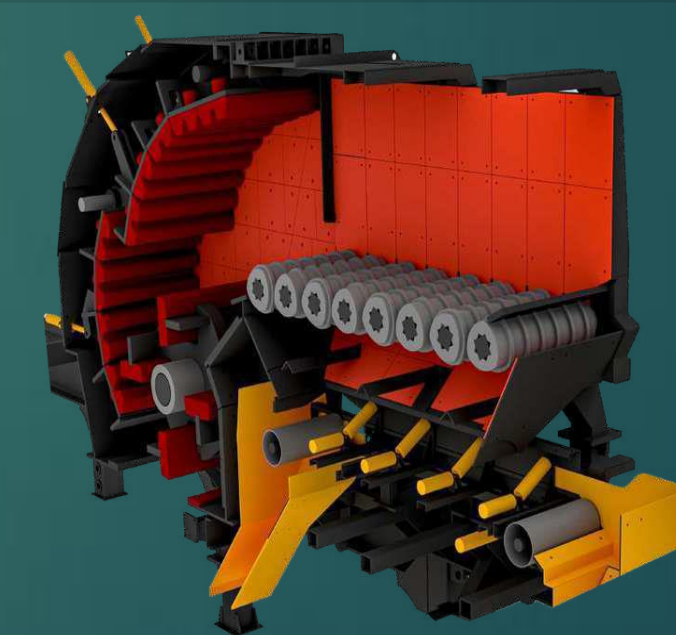
WOBBLER FEEDER (OPTIONAL)

SEQUENTIAL
DISKS



IN SOME CASES, WET STONES BROUGHT FROM THE STREAM BED TO THE CRUSHER PLANTS, WHICH ARE BASICALLY DESIGNED TO PROCESS DRY MATERIAL, ARE ALSO PROCESSED. BUT WET OR STICKY MATERIAL MAY BLOCK THE SCREENS AND FEEDERS THAT PERFORM THE SCREENING AND FEEDING FUNCTION AND PREVENT THE PLANT FROM WORKING EFFICIENTLY.

WOBBLER
FEEDER
INNER
VIEW



THE EQUIPMENT DESIGNED TO PREVENT THESE SITUATIONS IS THE WOBBLER FEEDER. THE WOBBLER FEEDER WORKING PRINCIPLE WORKS WITH THE PRINCIPLE OF ROTATING IN THE SAME DIRECTION AND SYNCHRONOUSLY BY KEEPING A DISTANCE BETWEEN THE SEQUENTIAL DISCS DESIGNED IN DIFFERENT FORMS.

COUPLED
MOTORS



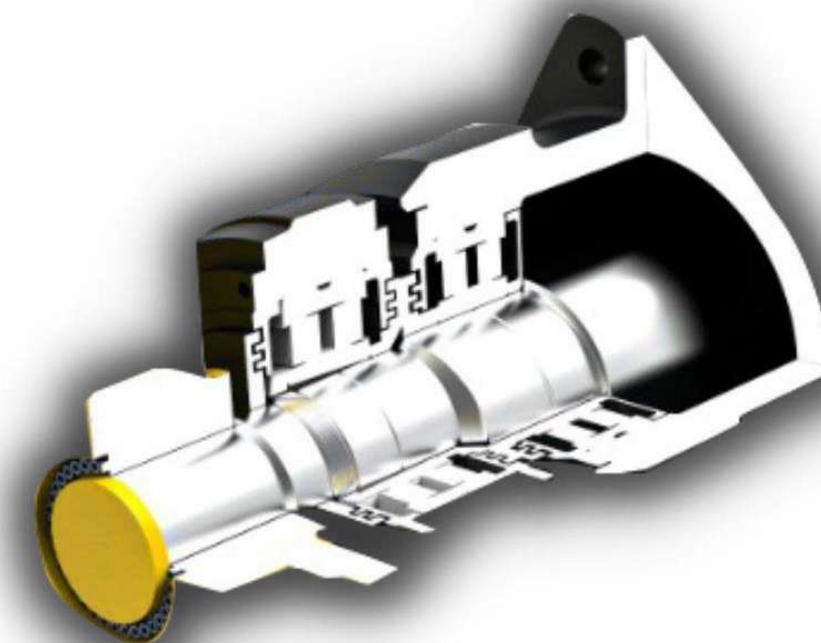
ALTHOUGH IT WORKS AT LOW SPEED, IT HAS A VERY HIGH PROCESSING CAPACITY.



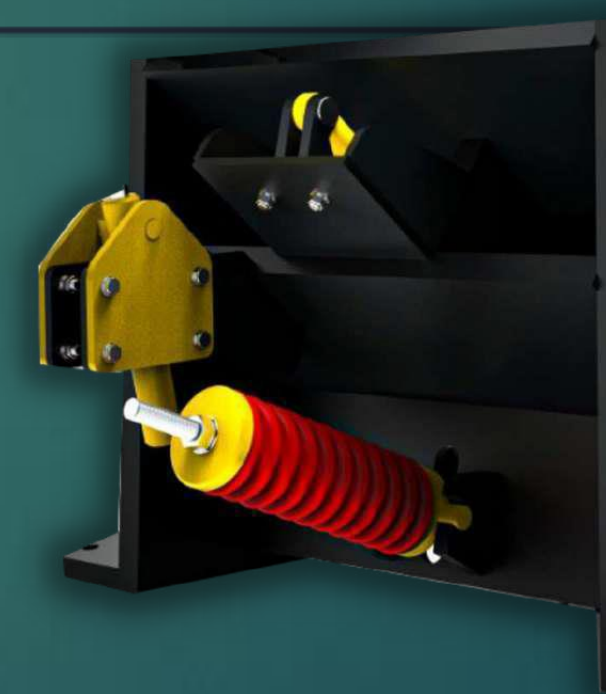
JAW CRUSHER

- **MODEL:** MCK 90
- **MAX. FEEDING:** 600 MM
- **CLOSED SIZE SETTING:** 50-150 MM
- **MOTOR:** 75 KW.
- **JAW CASTINGS:** %16-18 MN +/- %2,2 CR ALLOY STEEL CASTING
- **CONFIGURATION SYSTEM:** IT WORKS WITH SPRING-ASSISTED HYDRAULIC PISTONS
- **CAPACITY:** 120-180 T/H.
- **WEIGHT:** 13.8 TONS
- **FLYWHEEL:** SFERO CASTING, QUALITY GGG60
- **BODY:** 50 MM WELDED STEEL CONSTRUCTION AND BOLTED
- **JAW:** JAWS AND WEAR PLATES 16-18% MANGANESE ALLOY CASTING
- **BEARINGS:** NACHI - SKF – FAG OR EQUIVALENT BRAND
- **ECCENTRIC SHAFT:** CR-NI-MO IT IS ALLOY 4140 FORGED STEEL
- **FLYWHEEL:** THE SHEET IS COVERED WITH CASING
- **PITMAN:** GS 45 STEEL CASTING

ECCENTRIC
SHAFT

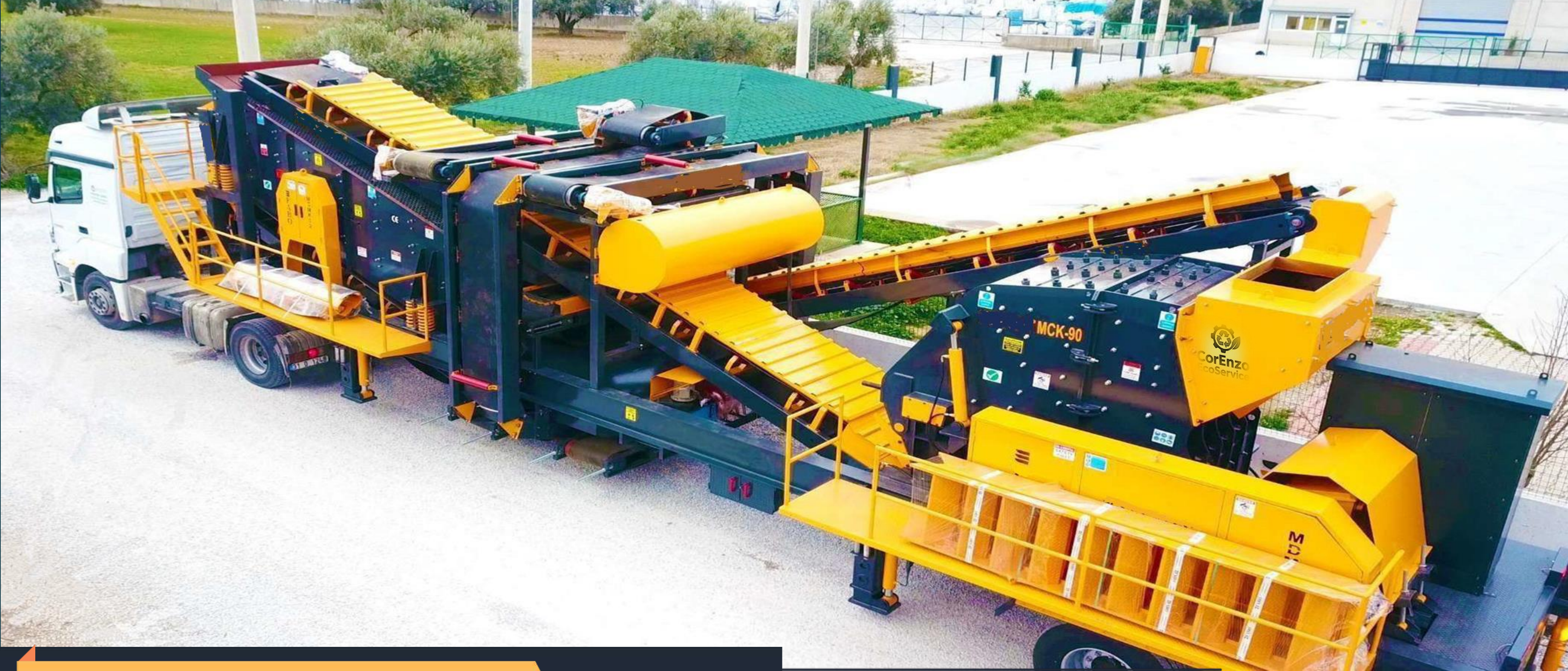


JAW
ADJUSTMENT
SETTING



STRETCHING
ADJUSTMENT





2. MOBILE CHASSIS

IN THE SECOND CHASSIS, THERE IS A SECONDARY IMPACT CRUSHER, VIBRATING SCREEN, FLAP SYSTEM (OPTIONAL), STOCK, AND FEEDBACK CONVEYOR BELTS.

- THE CHASSIS BODY IS MANUFACTURED FROM 400 IPE S275JR.
- CHASSIS AND BUNKER FEET 200x200x10mm PRODUCED FROM A SPECIAL PROFILE
- TELESCOPIC FEET 180x180x8mm/ CHASSIS FEET ARE TELESCOPIC.
- IT HAS 2 AXLES AND DRIVES WITH AIR BREAKS PARTS AND SIGNALIZATION EQUIPMENT AVAILABLE.
- SPECIAL HEAVE DUTY TYPE CONSTRUCTION CHASSIS.
- HYDRAULIC FEET MECHANISM (6 PCS).
- 2 INCH KING PIN WITH SPECIAL HEAT TREATMENT.
- ALL ELECTRICAL COMPONENTS SIEMENS OR AS A SCHNEIDER BRAND IT WILL BE USED, ACCORDING TO THE LIMIT LEVEL, IT WILL BE USED BY SELECTING A HIGHER POWER VALUE.
- AN EMERGENCY SAFETY BUTTONS ARE AVAILABLE AT THE FRONT AND BACK OF THE PLANT.

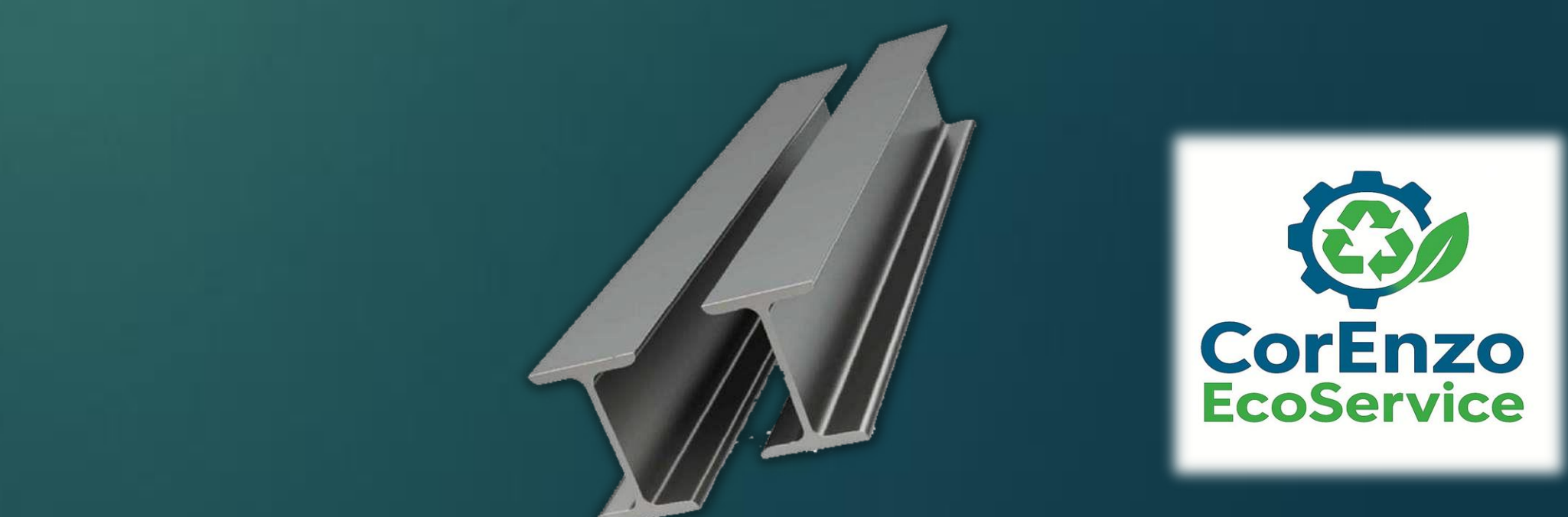
HYDRAULIC LEGS



BRAKE AXLE SYSTEM



ROBUST CHASSIS BODY





SECONDARY IMPACT CRUSHER

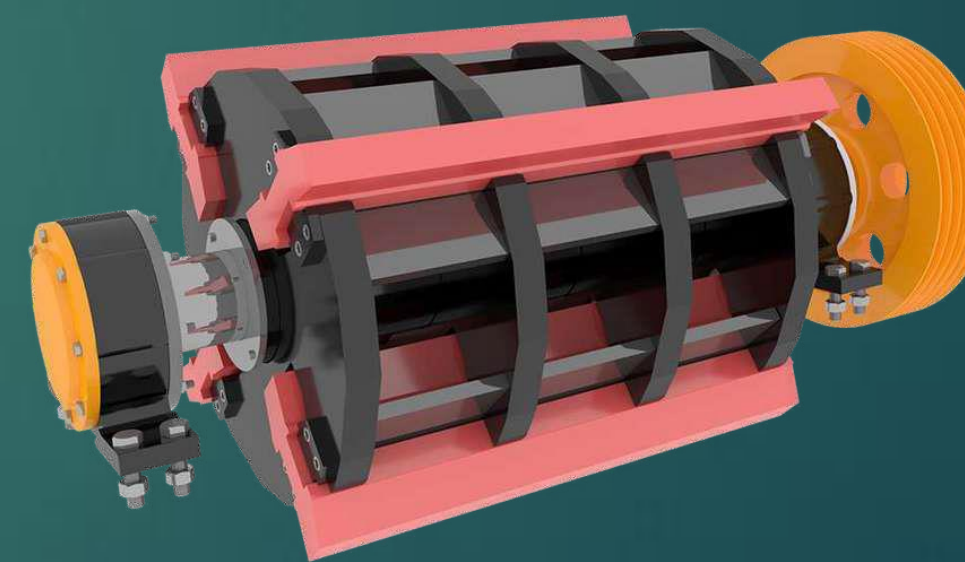
- **MODEL:** DMK-02
- **TYPE:** SECONDARY IMPACT CRUSHER
- **DRIVE SYSTEM:** BELT-PULLEY SYSTEM
- **ROTOR SIZE:** 1250 X Ø1100 MM
- **ROTOR SHEET THICKNESS :** 70 MM
- **ROTOR HAMMERS:** %18-21 MANGANESE
- **MAXIMUM FEEDING:** 450 MM
- **MOTOR POWER:** 200 KW
- **MOTOR SPEED:** 750 RPM
- **BEARINGS:** NACHI - SKF – FAG OR EQUIVALENT BRAND
- **CAPACITY:** 170-250 T/H
- **MAIN BODY:** HEAT-TEMPERED STEEL AGAINST RESISTANCE. 15 MM THICKNESS
- **WEIGHT:** 16.600 KG

- THERE ARE 2 SURVEILLANCE COVERS.
- GAMAK, EMTAŞ OR EQUIVALENT MOTOR BRANDS ARE USED.
- HIGH ALLOY CHROME IS USED FOR CASTINGS.
- THE CRUSHER BOTTOM GAUGE HAS BOLTED WEAR LINERS TO PREVENT WEAR.

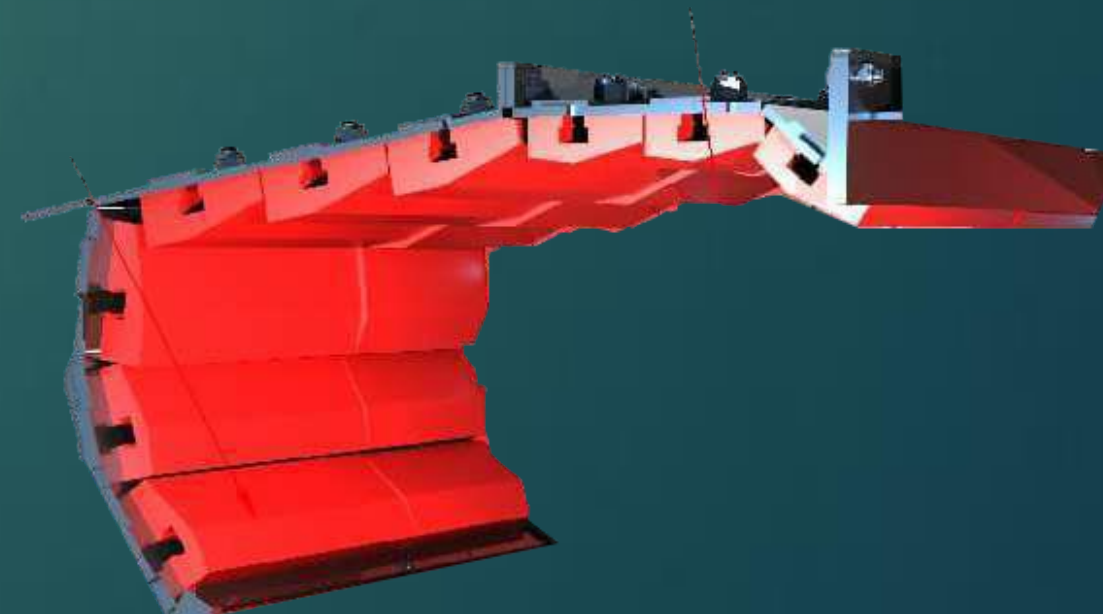
CRUSHER IMPACT BARS



CRUSHER ROTOR



CRUSHER UPPER BARS



SECONDARY IMPACT CRUSHER'S INNER VIEW

- 1- CRUSHER'S FEEDING CHUTE
- 2- CRUSHER'S ROTOR
- 3- HAMMER HOLDING LOCK
- 4- CRUSHER'S BOTTOM HAMMER
CONFIGURATION
- 5- HAMMER TIGHTENING BOLT
- 6- CRUSHER'S MIDDLE HAMMER
CONFIGURATION
- 7- CRUSHER'S MIDDLE HAMMER
- 8- CRUSHER'S MIDDLE-UPPER HAMMER
CASTINGS
- 9- CRUSHER'S UPPER WALL HAMMERS
- 10- CRUSHER'S SIDE LININGS

SECONDARY IMPACT CRUSHER'S OUTER VIEW

- 1- IMPACT BAR SURVEILLANCE COVERS
- 2- IMPACT BAR FIXED CONFIGURATION
- 3- IMPACT BAR FIXED CONFIGURATION
- 4- IMPACT BAR SLED CONFIGURATION
- 5- BODY OPEN-CLOSE PISTON
- 6- CRUSHER'S BOTTOM PISTON
CONFIGURATION
- 7- CRUSHER'S BEARING HOUSE
LUBRICATION

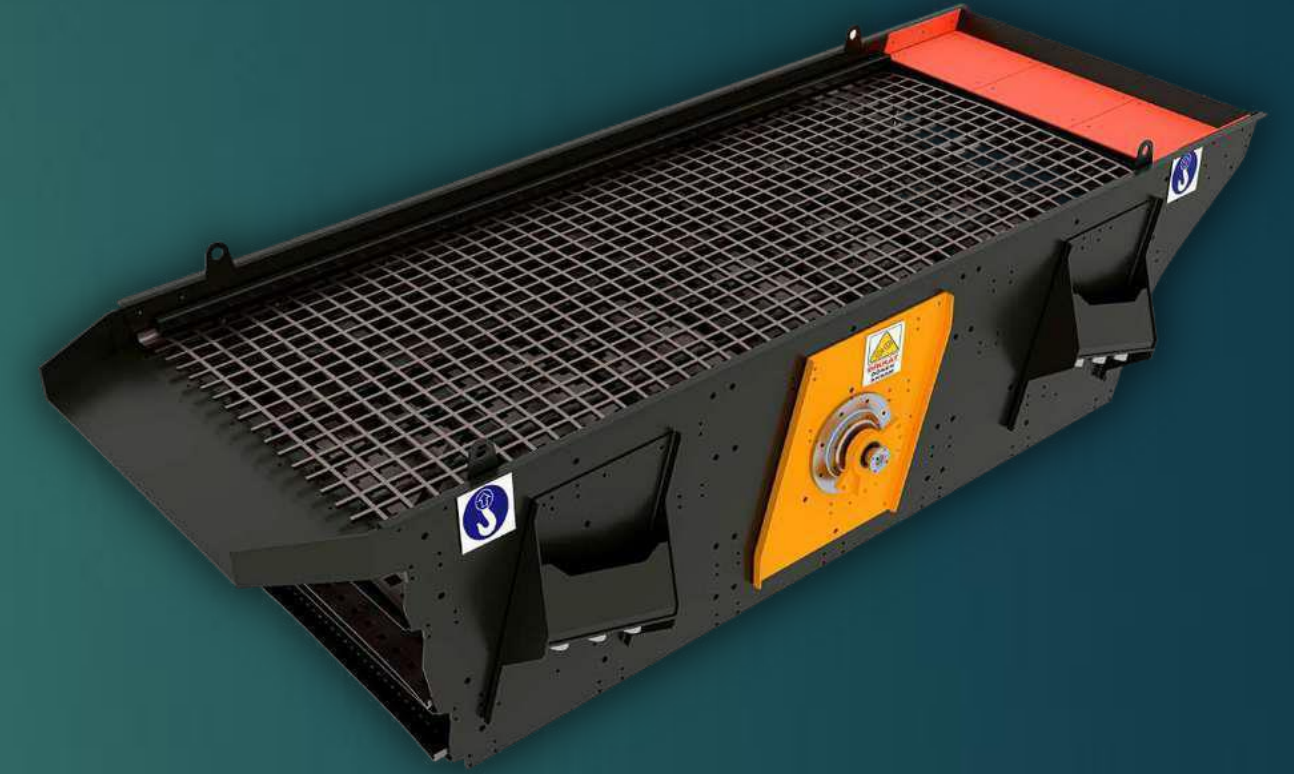
VIBRATING SCREEN

- MODEL: TE-1745
- MOTOR POWER: 18.5 KW GAMAK – EMTAŞ OR EQUIVALENT BRAND
- SPEED: 1000 RPM
- DECKS : 4 DECKS
- LENGTH: 4500 MM
- WIDTH: 1700 MM
- SCREEN ANGLE: 18°
- BEARINGS: NACHI -SKF-FAG OR EQUIVALENT BRAND.
- SPRINGS: 12 PIECES SPECIAL PRODUCTION FROM STEEL
- THERE IS A 10mm ST52 WEAR PLATE WHERE THE MATERIAL IS Poured
- THERE ARE PROTECTION ENCLOSURES SUITABLE FOR OCCUPATIONAL SAFETY

**VIBRATION
RESISTANT
BODY
STRUCTURE**



**WEAR
RESISTANT
SCREEN
MESHES**



**AUTOMATIC
LUBRICATION
SYSTEM**



FLAP SYSTEM (OPTIONAL)

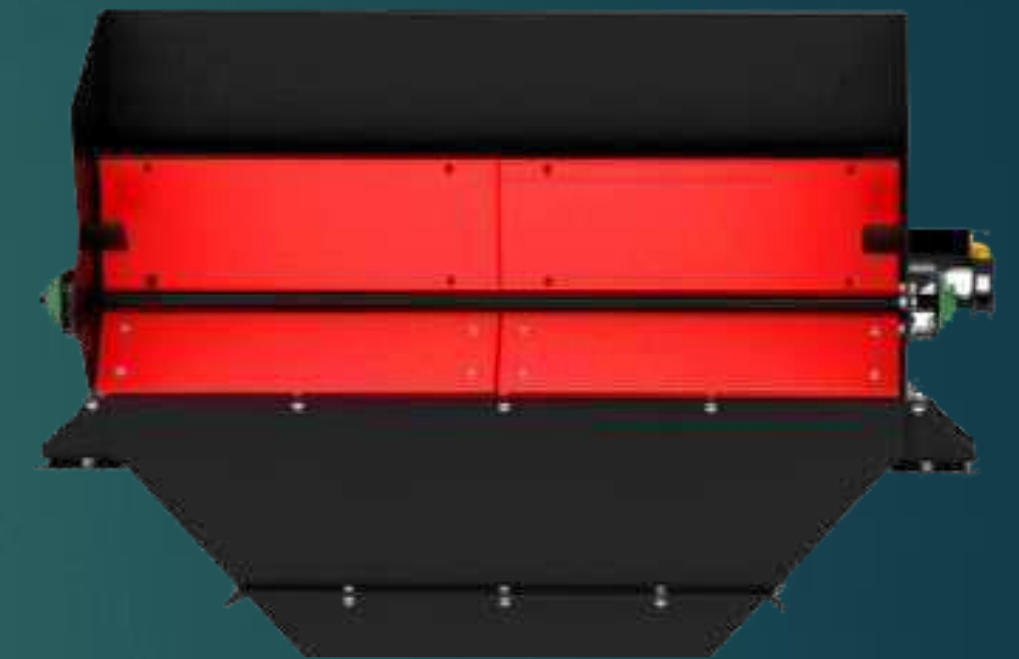
• OUR SPECIAL FLAP SYSTEM ENABLES FILLING MATERIALS WITH SIZES 0-31, 0-70, 0-150 MM TO BE OBTAINED WITHOUT USING A VIBRATING SCREEN WHEN REQUESTED.

• THE FEATURE OF OUR FLAP SYSTEM TO OBTAIN THE FILLING MATERIAL WITHOUT THE NEED TO USE THE VIBRATING SCREEN ENABLES THE VIBRATING SCREEN TO WORK LESS AND KEEPS THE WEAR THAT MAY OCCUR DUE TO HEAVY USE OVER TIME AT A MINIMUM.

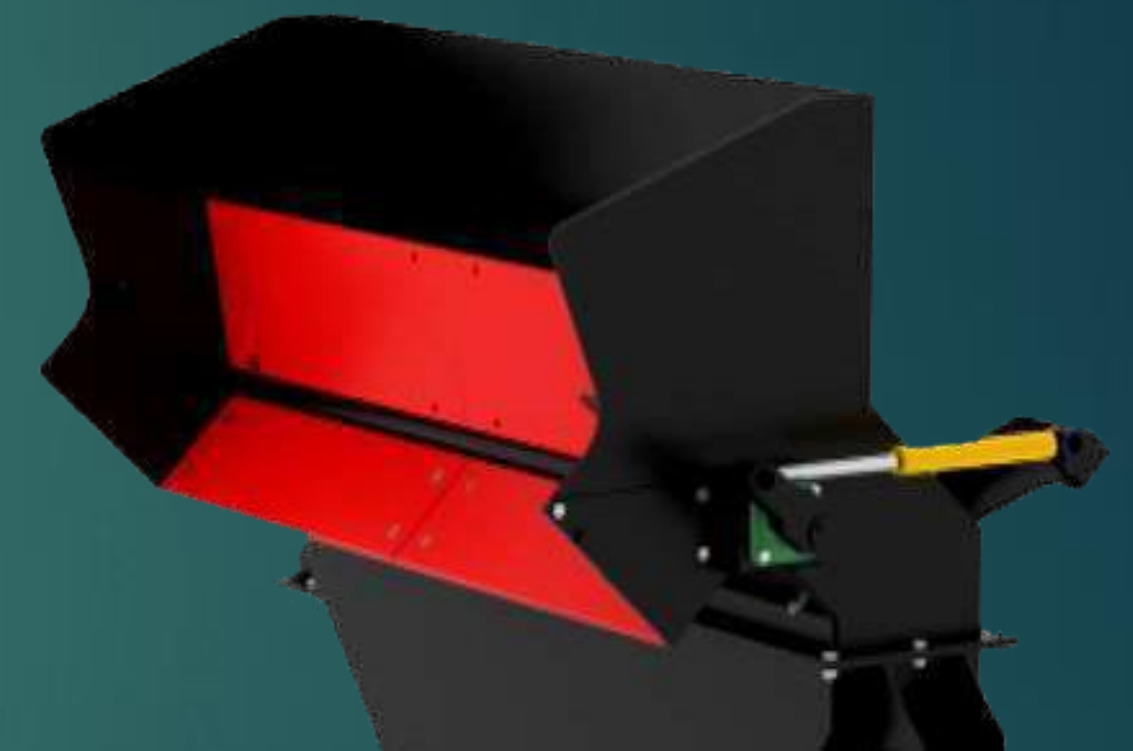
DISASSEMBLED
BODY
LOW WEIGHT



DIRECTABLE
SHEET



SPECIAL
HYDRAULIC
PISTON



UNDER JAW CONVEYOR BELT

- LENGTH: 12.700 MM
- WIDTH: 800 MM
- MOTOR POWER: 11 KW

* THERE ARE DIRECTIONAL ROLLERS TO PREVENT BELT SLIPPAGE

DMK EXIT-SCREEN FEEDING CONVEYOR BELT

- LENGTH: 11500 MM
- WIDTH: 800 MM
- MOTOR POWER: 11 KW

* IT IS A FOLDING TYPE CONVEYOR BELT MODEL DURING SHIPMENT

STOK CONVEYOR BELTS

- LENGTH: 8500 MM
- WIDTH: 500 MM
- MOTOR POWER: 5,5 KW

* IT IS A FOLDING TYPE CONVEYOR BELT MODEL DURING SHIPMENT

FEEDBACK CONVEYOR BELT (SHORT)

- LENGTH: 2020 MM
- WIDTH: 500 MM
- MOTOR POWER: 4 KW

* IT IS A FOLDING TYPE CONVEYOR BELT MODEL DURING SHIPMENT.

FEEDBACK CONVEYOR BELT (LONG)

- LENGTH: 7000 MM
- WIDTH: 500 MM
- MOTOR POWER: 5,5 KW

* IT IS A FOLDING TYPE CONVEYOR BELT MODEL DURING SHIPMENT.

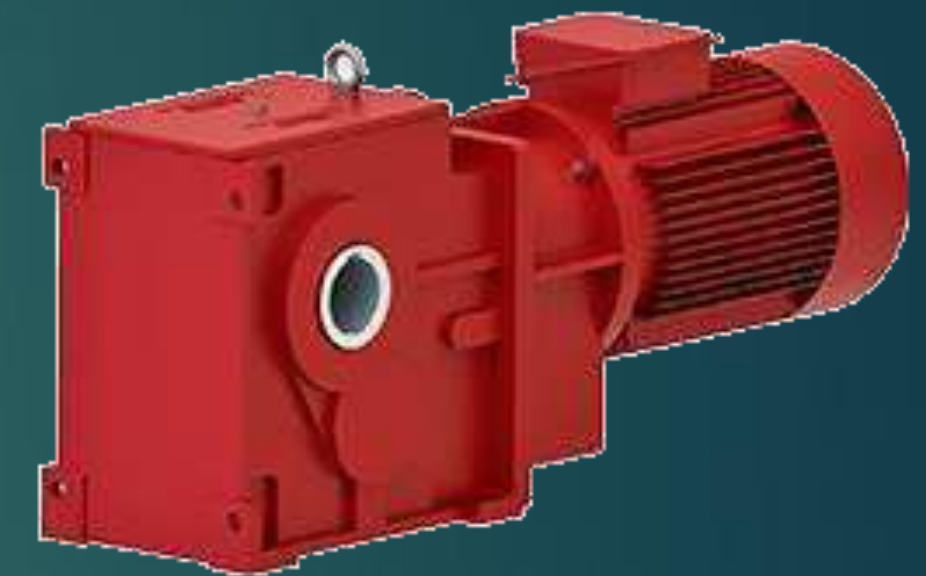
UNDER SCREEN CONVEYOR BELT

- LENGTH: 8000 MM
- WIDTH: 800 MM
- MOTOR POWER: 5,5 KW

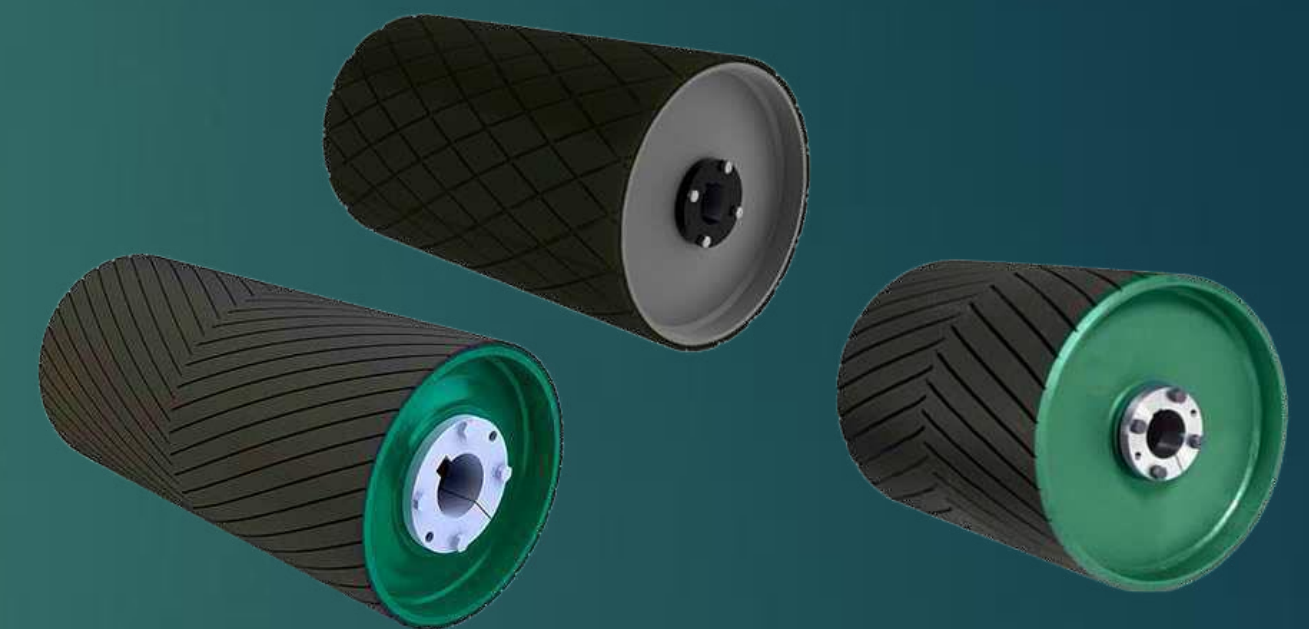
WEAR-RESISTANT RUBBER BELT



COUPLED MOTORS



VULCANIZED RUBBER DRUM



HYDRAULIC SYSTEM (OPTIONAL)

▶ THE HYDRAULIC SYSTEM IS THE SYSTEM THAT ENABLES THE PARTS ON THE CRUSHING AND SCREENING PLANT TO BE OPENED AND CLOSED WITHOUT THE NEED FOR MANPOWER. THESE PARTS ARE LISTED AS BUNKER COVERS, STOCK AND FEEDBACK CONVEYOR BELTS, AND THE CRUSHER.

GENEL FEATURES AND ADVANTAGES

- IT CAN BE EASILY MOVED BY A STAFF MEMBER.
- IT ACTIVATES THE RELEVANT PARTS IN THE SHORTEST TIME AND ENABLES THEM TO BE OPENED AND CLOSED, EASY TO USE AND DURABLE THANKS TO THE HYDRAULIC SYSTEM, THE PLANT CAN BE INSTALLED IN 1 DAY.
- NO CRANE ASSISTANCE IS REQUIRED FOR INSTALLATION
- HYDRAULIC SYSTEM PROVIDES EASY MAINTENANCE IN THE CRUSHER
- THERE ARE 6 HYDRAULIC FEET.
- IT PLAYS A GREAT ROLE IN TRANSPORTING AND INSTALLING FROM POINT (A) TO POINT (B).
- THANKS TO HYDRAULIC LOCKS, THE SAFETY OF LIFE AND PROPERTY IS PROTECTED AT THE HIGHEST LEVEL.

HYDRAULIC
BUNKER
COVERS

HYDRAULIC
CONVEYOR
BELTS

HYDRAULIC
CRUSHER
BODY



SHIPPING METHOD

MCK-90 MOBILE CRUSHING PLANT CAN EASILY REPLACE PLACES WITH A TRUCK HEAD.

THE MCK-90 MOBILE CRUSHER PLANT, WHICH IS MOVED ON THE BRAKED AXLE SYSTEM, IT CAN BE READY FOR TRANSPORTATION WITHIN 10 MINUTES.

THE MCK-90 MOBILE CRUSHING AND SCREENING PLANT, WHICH WE HAVE CREATED AS A RESULT OF KNOWLEDGE AND WORK, HAS BEEN DESIGNED IN THE MOST IDEAL WAY FOR THE USER WITH ITS CRUSHING AND SCREENING CAPACITY AND EASY TRANSPORTATION.

THE AIR BRAKE SYSTEM IN THE AXLE SYSTEM MAXIMIZES THE LIFE AND PROPERTY SAFETY OF THE USER.

IT COMES TO THE TRANSPORT POSITION WITHOUT THE NEED FOR MANPOWER.

TRANSPORTATION
WITH DOUBLE TRUCK



QUICK
INSTALLATION
WITH OUR
PROFESSIONAL
TEAM



MINIMUM
SPACE
REQUIREMENT

